

SCSI TOOLBOX, LLC

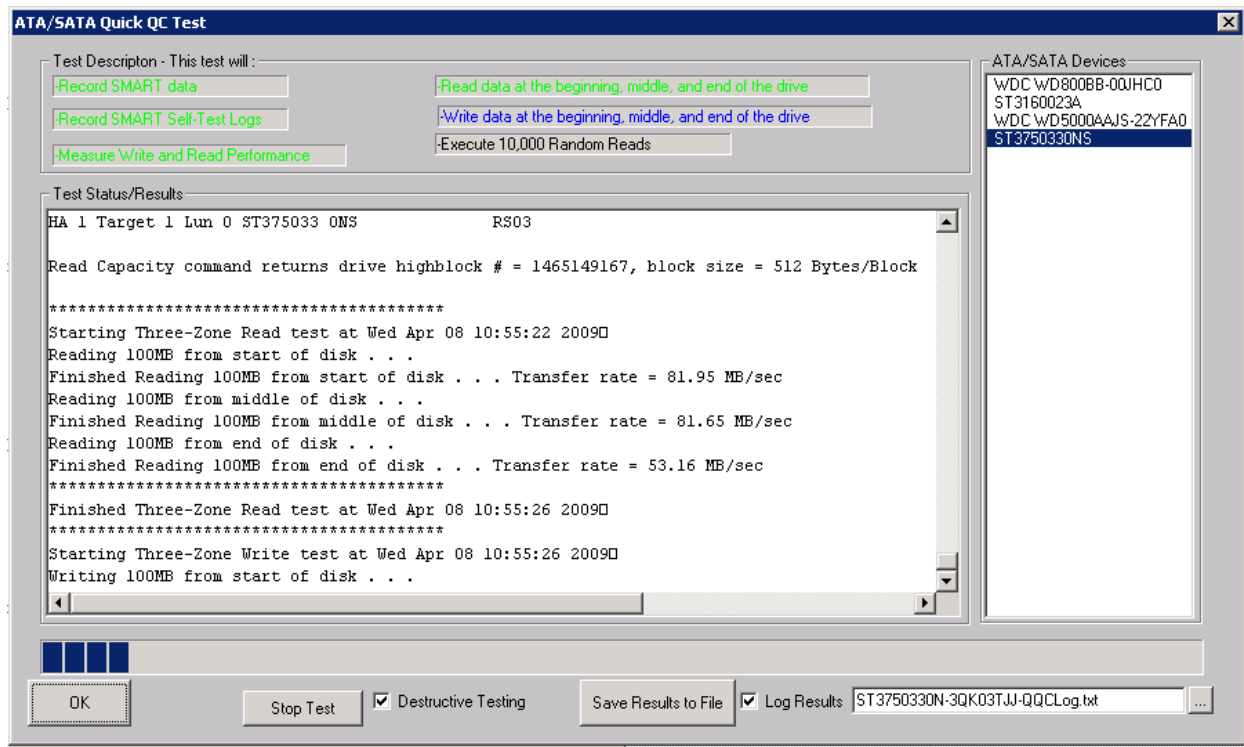
ATA Drive Confidence Test 1 (Quick QC)

Contents

ATA Drive Confidence Test 1 (Quick QC)	3
The test has one option:	4
-Destructive.....	4
Errors.....	4
SMART Data:	4
SMART Logs:.....	4
Notes:	Error! Bookmark not defined.

ATA Drive Confidence Test 1 (Quick QC)

This new test is part of the STB Suite, version 8.1.



This test will provide a quick overview of the state of your SATA drive. This test will run in just a few minutes.

The test will check the drives SMART data to see if any SMART parameter has exceeded its corresponding threshold. It will also retrieve all of the drives SMART Self-Test logs and check if any self-test has ever failed. It will also read and optionally write 100MB data blocks at the beginning, middle, and end of the drive. Then the test will execute 10,000 random seek operations.

The progress and results of each test step is reported and may be written to a log file.

As each test step is begun its description will be colored **blue**. If the test results in an error the description will be marked **red**. If the test step is successful it will be marked **green**.

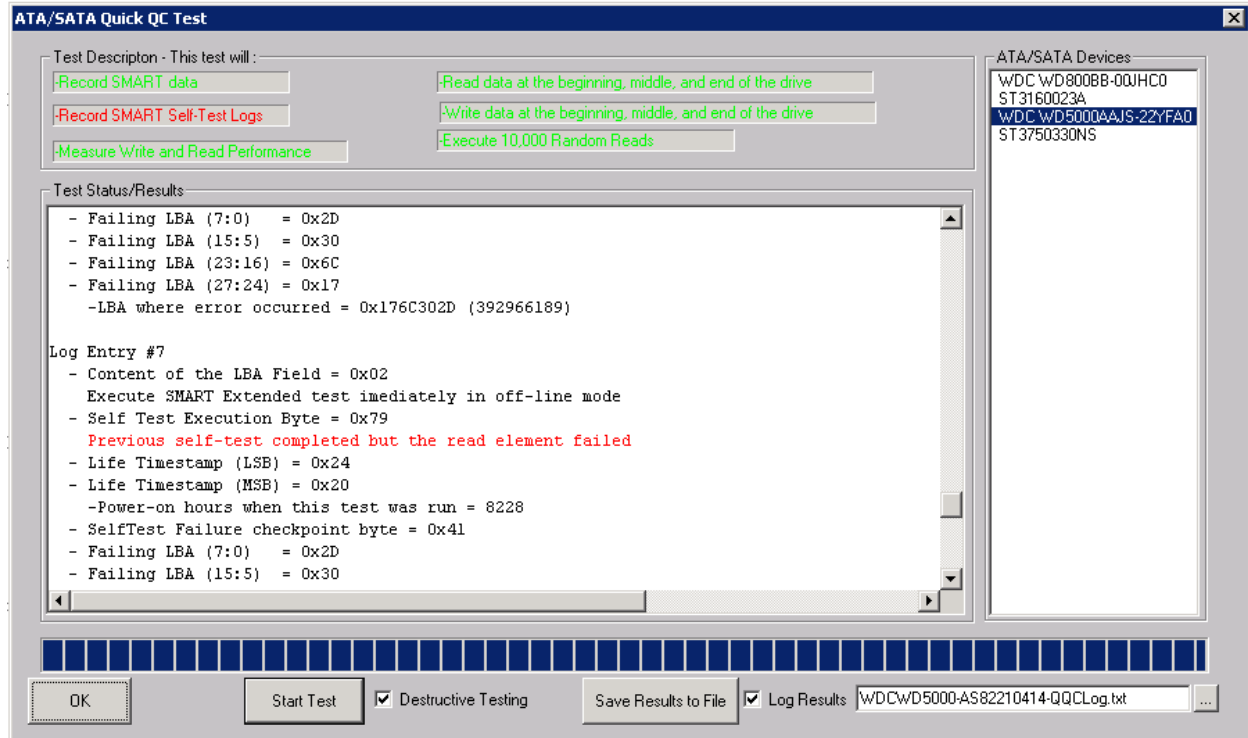
© Copyright 2009 SCSI Toolbox LLC

Sales: 720.249.2641

General: 303.972.2072

The test has one option:

-Destructive – with this option checked the test will run write data integrity tests on the beginning, middle, and end sections of the drive.



Errors

If a test segment encounters an error its description will be marked in **RED**.

SMART Data: In the case of SMART data the test will fail if any SMART parameter value has exceeded its corresponding threshold value. The failing parameter data will be marked in the results window in **RED**.

SMART Logs: If any SMART self-test log reports a failure the test segment will fail. The self-test log which indicates a failure will be marked in the results window in **RED**.

Notes: This test will only run on drives which are connected to a native (motherboard) SATA port. Nvidia based SATA ports are not currently supported.

© Copyright 2009 SCSI Toolbox LLC

Sales: 720.249.2641

General: 303.972.2072