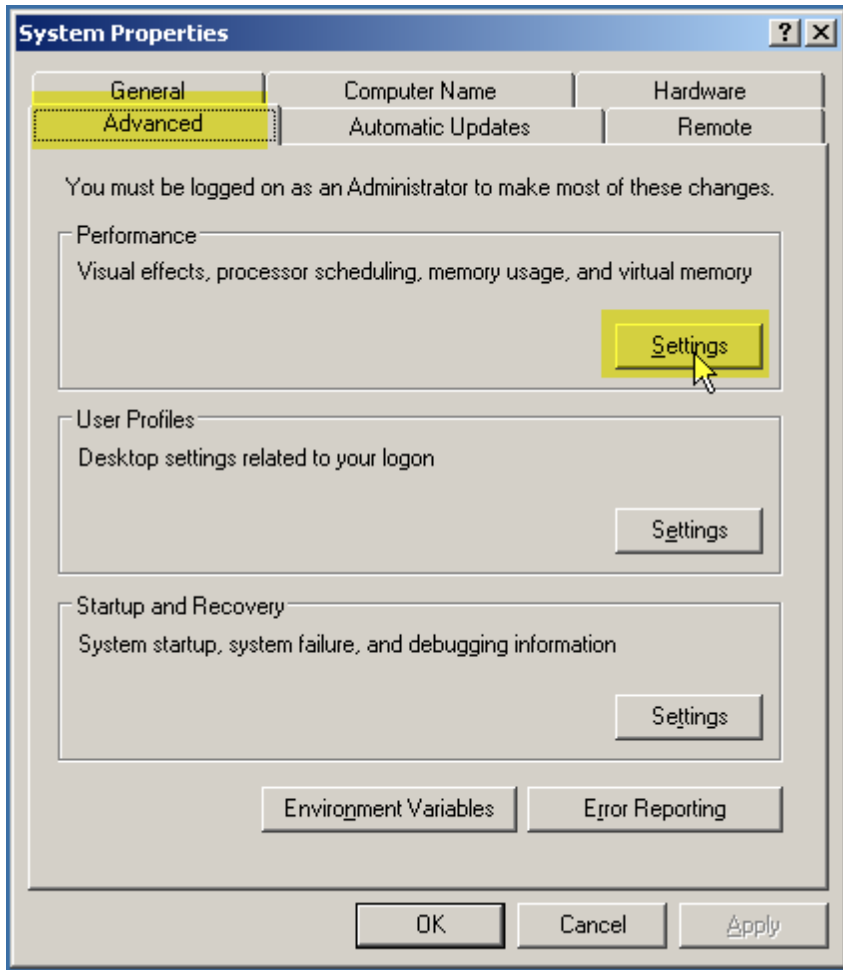
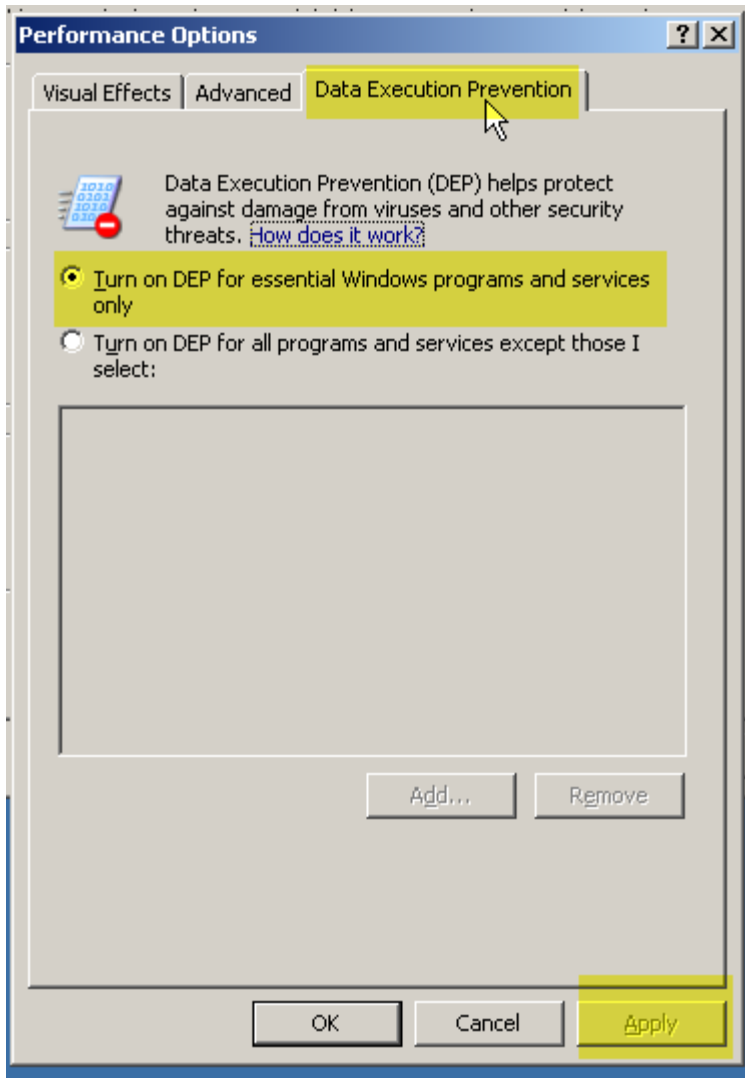


Installing STB Suite under Windows Server 2003

1. Open the System Properties dialog by clicking the Windows button + Break
2. Select the Advanced tab, then click Performance ->Settings



3. Select Data Execution Prevention, then click the setting "Turn on DEP for essential Windows programs and services only"



4. Click the "Apply" button
5. Reboot Windows 2003 and begin your STB Suite installation